



Harrington Road, SW7

Asking Price £1,600,000

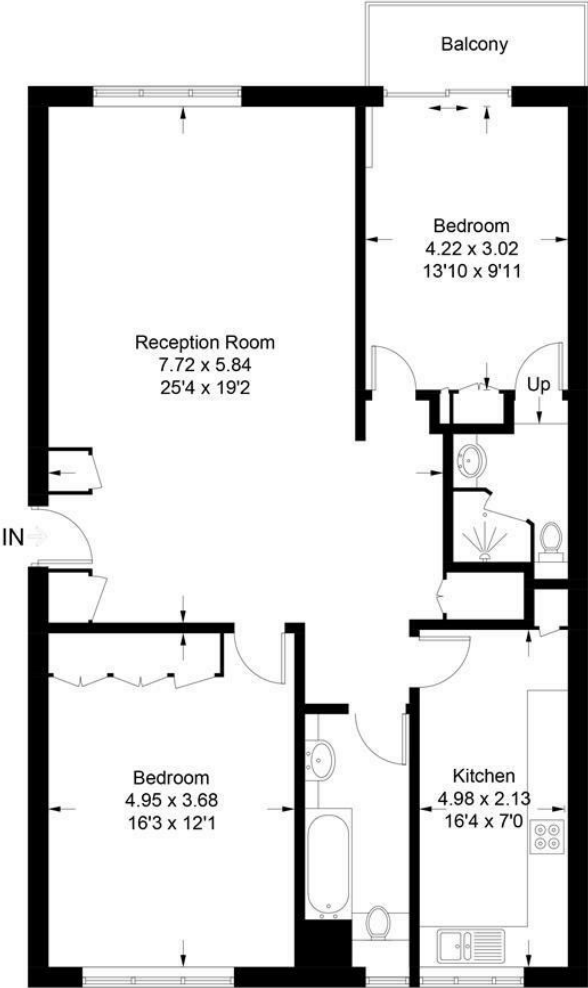
EPC: B

Gross Approx. Internal Area

1062.00 sq ft

Petersham House, SW7

Approximate Gross Internal Area = 98.7 sq m / 1062 sq ft



Fifth Floor

Illustration for identification purposes only.
measurements are approximate, not to scale. (ID686095)



£1,600,000
Leasehold

- Leasehold - approx. 146 years remaining
- Ground Rent: £200 PA
- Approx, Service Charge £8750 pa
- Including Heating & Hot Water
- RBKC Council Tax: Band F
- Lift
- Good Built-In Storage
- Building Caretaker
- EPC Rating: B
- Sinking Fund Contribution £1100 pa



STANLEY
PROPERTY.LONDON